

Eligible Services for Beginners

What We Do and Why We Do It

Schools and Libraries Division

Washington, DC • Seattle • Denver • Chicago • Newark • Los Angeles • Atlanta

September/October 2008

- The Eligible Services List (ESL)
- Product/Service Eligibility
 - Priority One
 - Telecommunications
 - Internet Access
 - Priority Two
 - Internal Connections (IC)
 - Basic Maintenance of IC
- Miscellaneous
- On-Premise Priority One Equipment

Eligible Services List

- What is the [Eligible Services List](#)?
 - The ESL is issued annually by the FCC as a reference for program participants to find out what products and services E-rate will support

- How is the Eligible Services List created?
 - Input from FCC Orders, USAC, and recommendations from the Public Comment Period.

Eligible Services List

- Five sections
 - Telecommunications Services
 - Internet Access
 - Internal Connections
 - Basic Maintenance of Internal Connections
 - Miscellaneous
- Three special areas with additional information
 - Special Eligibility Conditions
 - Glossary
 - Index

Eligible Services List Screen Shot

Schools & Libraries

Eligible Services List Schools and Libraries Support Mechanism for Funding Year 2008

Overall Eligibility Requirements for All Categories of Service:

The Eligible Services List indicates whether specific products or services may be able to receive discounts under the Schools and Libraries Support Mechanism.

The List is organized into four sections that represent the four funding categories established by the Federal Communications Commission (FCC) plus a Miscellaneous section that is applicable to multiple categories:

[Telecommunications Services](#)
[Internet Access](#)
[Internal Connections](#)
[Basic Maintenance of Internal Connections](#)
[Miscellaneous](#)

In addition, the following sections are provided:

[Special Eligibility Conditions](#)
[Glossary](#), providing additional information about
the terms used in this Eligible Services List
[Index](#)

Funding may be provided only for eligible products or services that will be used for educational purposes. See 47 C.F.R. §§ 54.500(b), 54.504. The conditions for eligibility are described in the specific entries of this Eligible Services List. Services that are not eligible are listed at the end of each category.

Telecommunications Services (Priority One)

Basic Telephone Services

- Basic telephone services do NOT require a technology plan
 - 800 service
 - Centrex service
 - Local and long distance phone service
 - POTS (Plain Old Telephone Service)
 - Radio loop
 - Wireless telephone services

Non-Basic Telecom Services

- Non-basic telecom services require a technology plan
 - All services listed as Digital Transmission Services
 - Includes but is not limited to: T-x, ATM, DSL, OC-x, Fiber Optic, DS-x, Frame Relay and PRI

Internet Access (Priority One)

Internet Access (IA)

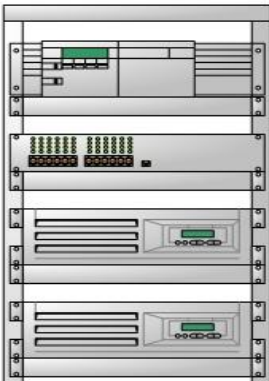


- Basic conduit access to the Internet, E-mail service, and web hosting are eligible IA services
- Basic conduits include but are not limited to:
 - Broadband over Power Lines (BPL)
 - Cable Modem
 - Digital Subscriber Line (DSL)
 - Satellite
 - T-x, DS-x, OC-x

Internal Connections (IC) (Priority Two)

A Visual Guide to IC

- Internal connections are the equipment and wiring necessary to receive services in the classrooms and rooms in libraries
- Pictorial of the eligibility of services and products
- Explanation of conditionality
- Services and products are example configurations

Internal Connections Ex. 1

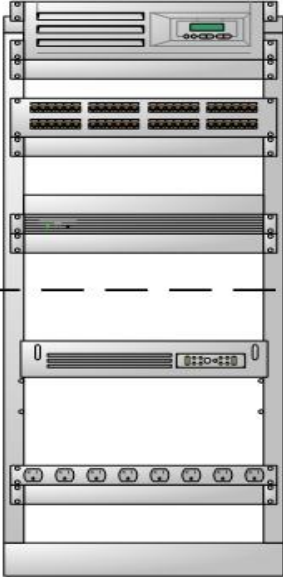
Eligibility		Product - Function	
Eligible		Router – Data Distribution Switch – Data Distribution E-mail Server - Servers DHCP/DNS Server - Servers	
Conditionally Eligible *			Tape Drive - Data Protection Uninterruptible Power Supply (UPS) - Data Protection
Not Eligible			

Conditions:

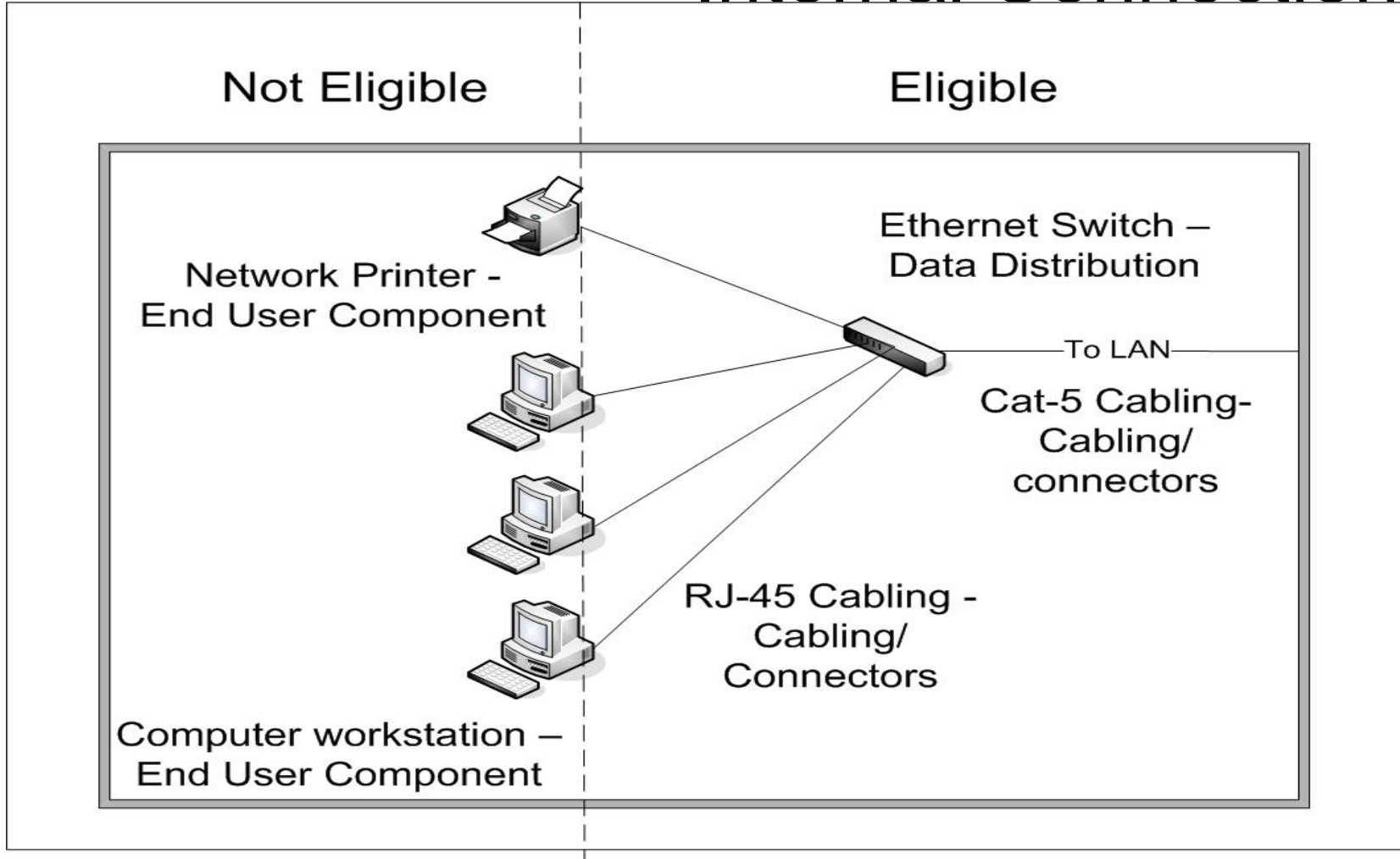
*Eligible if used with eligible equipment.

Cost Allocation may be utilized if supporting ineligible equipment

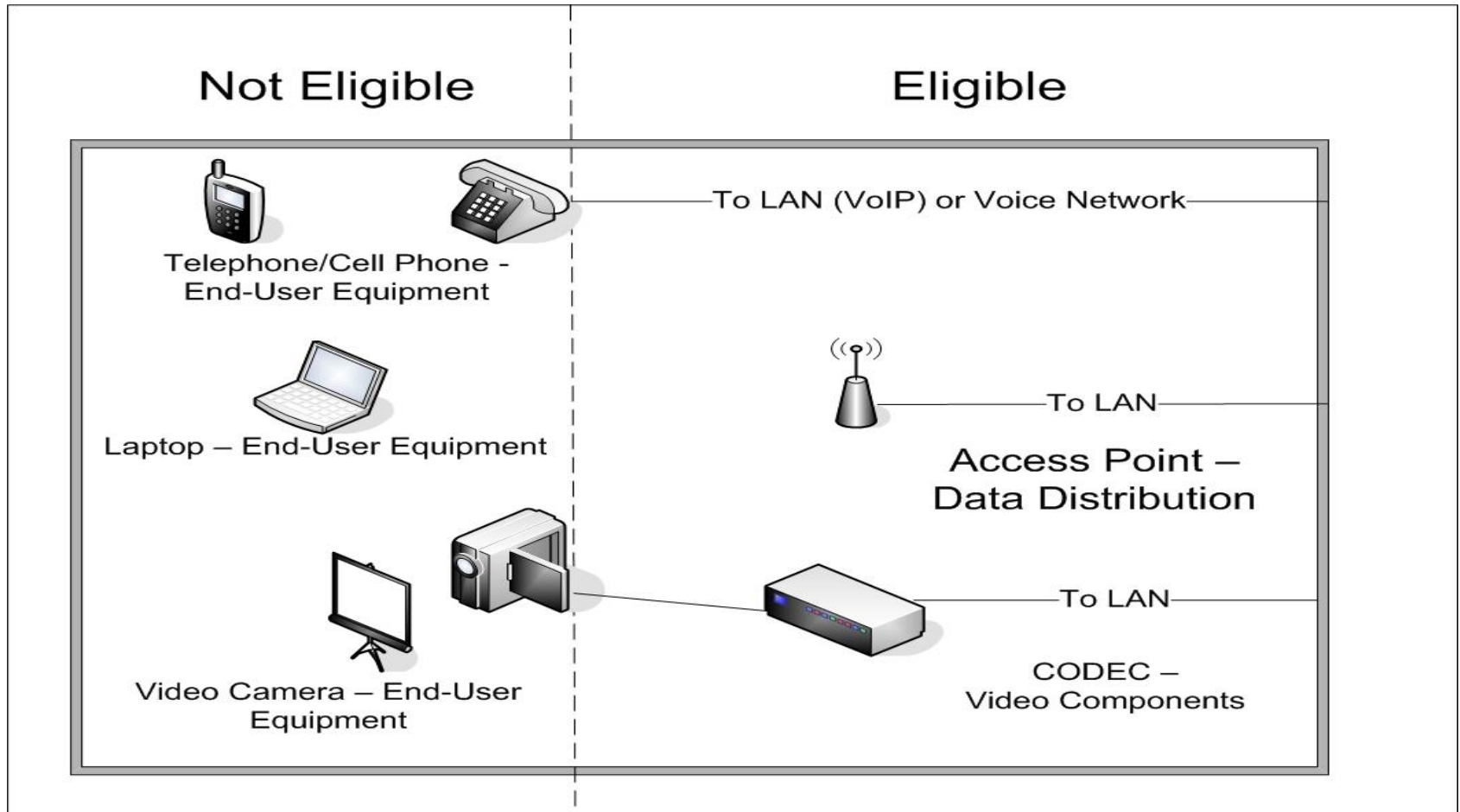
Internal Connections Ex. 2

Eligibility	Product - Function
Eligible	 <p>PBX – Telephone Components Patch Panel – Cabling/ Connectors Master Control Unit – Video Components</p>
Conditionally Eligible	<p>Uninterruptible Power Supply (UPS) Data Protection¹</p> <p>Surge Protector – Ineligible Internal Connection Components²</p> <p><u>Conditions:</u></p> <p>¹Eligible if used with eligible equipment. ²Eligible if provided as an integral component of a rack or cabinet w/out separately identifiable cost.</p>

Classroom Internal Connections



Classroom Internal Connections Ex. 2



Basic Maintenance of Internal Connections (Priority Two)

Basic Maintenance of IC

- Ensures the necessary and continued operation of eligible internal connection components at eligible locations.
- BMIC is a Recurring service
 - Delivery must be within July 1st – June 30th
- BMIC is exempt from the Two-in-Five rule

Basic Maintenance of IC

- Eligible:
 - Basic technical support of eligible hardware
 - Repair and upkeep of eligible hardware
 - Wire and cable maintenance
 - Configuration changes
- Ineligible:
 - End-user support such as a student calling a help desk for technical assistance

Miscellaneous

Miscellaneous

- Contains supporting charges of eligible goods, Interconnected VoIP and Voicemail
- Miscellaneous items reflect same category as the product or service being requested

Miscellaneous

- Eligible:
 - Installation
 - Activation
 - Initial configuration
 - Training
 - Shipping
 - Taxes and lease fees
- Ineligible:
 - Interest or Finance charges
 - Late Payment fees
 - Termination charges
 - Initial Planning
 - End-user training

On-Premise Priority One Equipment

On-Premise Priority One Equipment

- What are they?
 - On-premise Priority One Equipment are service provider equipment located on the applicant's premise
 - This equipment may be eligible if several conditions are met

On-Premise Equipment

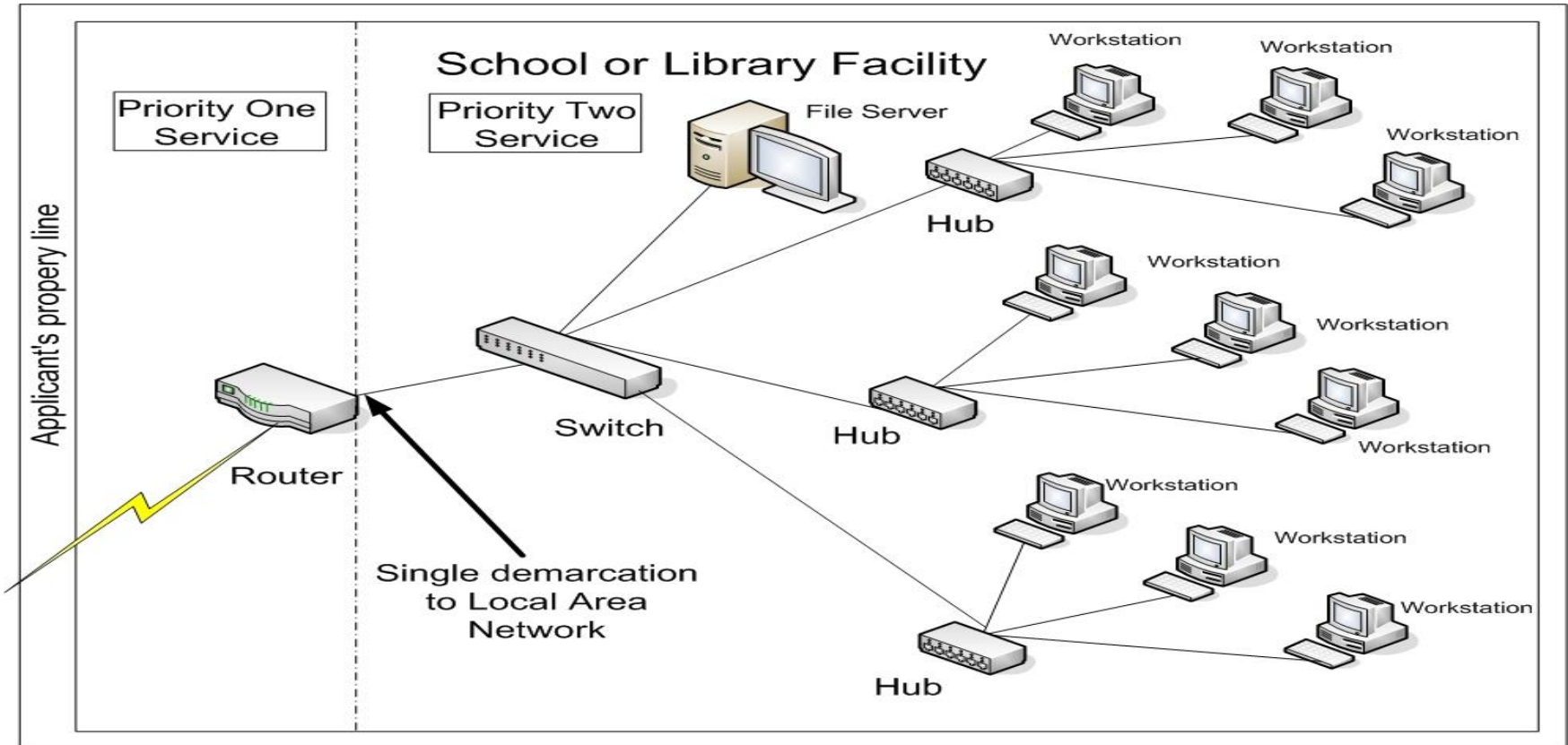
1. Must be an integral component of Telecommunications or Internet Access service
2. The same service provider that provides the telecommunications or Internet access service provides the equipment
3. Responsibility for maintaining the equipment rests with the service provider, not the school or library
4. The school or library may never own the equipment

On-Premise Equipment

5. Upfront, capital charges of the eligible on-premise equipment are less than 67% of total charges (recurring plus non-recurring) in the funding year.
6. Must only be used for the receipt of the eligible telecommunications or Internet access service
7. The Local Area Network of the school or library is functional without dependence on the equipment.
8. No limitations that would prevent the service provider from using its network equipment in part for other customers

On-Premise Equipment 1

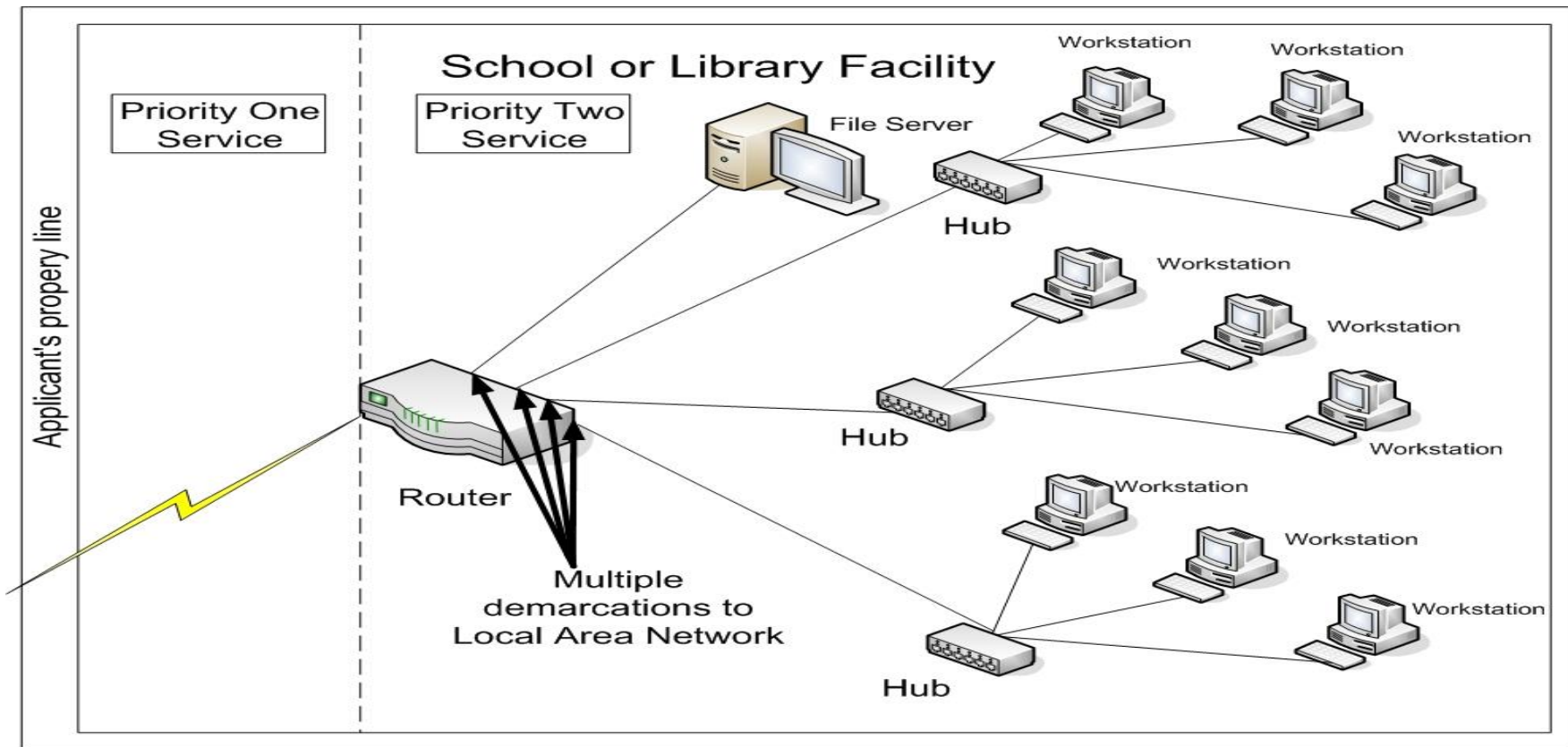
- This leased router may be eligible for P1 funding if all conditions are met



- Note: Single demarcation – If the router is removed, the LAN would continue to function

On-Premise Equipment 2

- This leased router is NOT eligible for P1 funding



- Note: Multiple demarcations – If the router is removed, the LAN would cease to function which violates program rules for Priority One eligibility. Router may be eligible in IC.

Questions?